

TECHNICAL MANUAL

ORGANIZATIONAL, DIRECT SUPPORT, AND GENERAL SUPPORT MAINTENANCE
REPAIR PARTS AND SPECIAL TOOLS LISTS
(INCLUDING DEPOT MAINTENANCE REPAIR PARTS AND SPECIAL TOOLS)

FOR

POWER SUPPLY PP-4606A/G
(NSN 6130-00-504-0327)

HEADQUARTERS, DEPARTMENT OF THE ARMY

28 NOVEMBER 1977

TECHNICAL MANUAL }
No. 11-6130-243-24P-1 }

HEADQUARTERS
DEPARTMENT OF THE ARMY
WASHINGTON, DC, 28 November 1977

**ORGANIZATIONAL, DIRECT SUPPORT, AND GENERAL SUPPORT MAINTENANCE
REPAIR PARTS AND SPECIAL TOOLS LISTS
(INCLUDING DEPOT MAINTENANCE REPAIR PARTS AND SPECIAL TOOLS)
FOR
POWER SUPPLY PP-4606A/G
(NSN 6130-00-504-0327)**

Current as of 23 August 1977

REPORTING OF ERRORS

You can improve this manual by recommending improvements using DA Form 2028-2 (Test) located in the back of the manual. Simply tear out the self-addressed form, fill it out as shown on the sample, fold it where shown, and drop it in the mail.

If there are no blank DA Form 2028-2 (Test) in the back of your manual, use the standard DA Form 2028 (Recommended Changes to Publications and Blank Forms) and forward to the Commander, US Army Electronics Command, ATTN: DRSEL-MA-Q Fort Monmouth, NJ 07703.

In either case a reply will be furnished direct to you.

Table of Contents

| | Page | Illus Figure |
|---|------|-----------------|
| SECTION-I. Introduction | 1 | |
| II. Repair parts list | 5 | |
| GROUP00 Power Supply PP-4606A/G | 5 | 1-4 |
| SECTION III. Special tools list (Not applicable) | | |
| IV. National stock number and part number index | 12 | |

*This manual supersedes so much of TM 11-6130-243-12-1, 9 October 1967 and TM 11-6130-243-35-1, 9 November 1967, as pertains to repair parts and special tools list.

SECTION I INTRODUCTION

1. Scope

This manual lists spares and repair parts; special tools; special test, measurement, and diagnostic equipment (TMDE), and other special support equipment required for performance of organizational, direct support, and general support maintenance of the PP-4606A/G. It authorizes the requisitioning and issue of spares and repair parts as indicated by the source and maintenance codes.

2. General

This Repair Parts and Special Tools List is divided into the following sections:

a. Section II. Repair Parts List. A list of spares and repair parts authorized for use in the performance of maintenance. The list also includes parts which must be removed for replacement of the authorized parts. Parts lists are composed of functional groups in numeric sequence, with the parts in each group listed in figure and item number sequence.

b. Section III. Special Tools List. Not applicable.

c. Section IV. National Stock Number and Part Number Index. A list, in National item identification number (NIIN) sequence, of all National stock numbers (NSN) appearing in the listings, followed by a list, in alphameric sequence, of all part numbers appearing in the listings. National stock numbers and part numbers are cross-referenced to each illustration figure and item number appearance.

3. Explanation of Columns

a. Illustration. This column is divided as follows:

(1) *Figure number.* Indicates the figure number of the illustration on which the item is shown.

(2) *Item number.* The number used to identify item called out in the illustration.

b. Source, Maintenance, and Recoverability (SMR) Codes.

(1) *Source code.* Source codes indicate the manner of acquiring support items for maintenance, repair, or overhaul of end items. Source codes are entered in the first and second positions of the Uniform SMR Code format as follows:

| Code | Definition |
|------|--|
| PA | Item procured and stocked for anticipated or known usage. |
| X D | A support item that is not stocked. When required, item will be procured through normal supply channels. |

NOTE

Cannibalization or salvage may be used as a source of supply for any items source coded above except those coded XA and aircraft support items as restricted by AR 700-42.

(2) *Maintenance code.* Maintenance codes are assigned to indicate the levels of maintenance authorized to USE and REPAIR support items. The maintenance codes are entered in the third and fourth positions of the Uniform SMR Code format as follows:

(a) The maintenance code entered in the third position will indicate the lowest maintenance level authorized to remove, replace, and use the support item. The maintenance code entered in the third position will indicate one of the following levels of maintenance:

| Code | Application/Explanation |
|------|---|
| O | Support item is removed, replaced, used at the organizational level. |
| H | Support item is removed, replaced, used at the general support level. |

(b) The maintenance code entered in the fourth position indicates whether the item is to be repaired and identifies the lowest maintenance level with the capability to perform complete repair (i.e., all authorized maintenance functions). This position will contain one of the following maintenance codes:

| Code | Application/Explanation |
|------|---|
| H | The lowest maintenance level capable of complete repair of the support item is the general support level. |
| Z | Nonreparable. No repair is authorized. |

(3) *Recoverability code.* Recoverability codes are assigned to support items to indicate the disposition action on unserviceable items. The recoverability code is entered in the fifth position of the Uniform SMR Code format as follows:

| Recoverability codes | Definition |
|----------------------|--|
| Z | Nonreparable item. When unserviceable, condemn and dispose at the level indicated in position 3. |
| H | Reparable item. When uneconomically reparable, condemn and dispose at the general support level. |

c. National Stock Number. Indicates the National stock number assigned to the item and will be used for requisitioning purposes.

d. Part Number. Indicates the primary number used by the manufacturer (individual, company,

TM 11-6130-243-24P-1

firm, corporation, or Government activity), which controls the design and characteristics of the item by means of its engineering drawings, specifications, standards, and inspection requirements to identify an item or range of items.

NOTE

When a stock numbered item is requisitioned, the repair part received may have a different part number than the part being replaced.

e. Federal Supply Code for Manufacturer (FSCM). The FSCM is a 5-digit numeric code listed in SB 708-42 which is used to identify the manufacturer, distributor, or Government agency, etc.

f. Description. Indicates the Federal item name and, if required, a minimum description to identify the item.

g. Unit of Measure (U/M). Indicates the standard of the basic quantity of the listed item as used in performing the actual maintenance function. This measure is expressed by a two-character alphabetical abbreviation (e.g., ea, in, pr, etc). When the unit of measure differs from the unit of issue, the lowest unit of issue that will satisfy the required units of measure will be requisitioned.

h. Quantity Incorporated in Unit. Indicates the quantity of the item used in the breakout shown on the illustration figure, which is prepared for a functional group, subfunctional group, or an assembly.

4. Special Information

The following publications pertain to the PP-4606A/G and its components

TM 11-6130-243-12-1, Power Supply PP-4606A/G

TM 11-6130-243-35-1, Power Supply PP-4606A/G

5. How to Locate Repair Parts

a. When National stock number or part number is unknown.

(1) *First.* Using the table of contents, determine the functional group within which the item belongs. This is necessary since illustrations are prepared for functional groups and listings are divided into the same groups.

(2) *Second.* Find the illustration covering the functional group to which the item belongs.

(3) *Third.* Identify the item on the illustration and note the illustration figure and item number of the item.

(4) *Fourth.* Using the Repair Parts Listing, find the figure and item number noted on the illustration.

b. When National stock number or part number is known.

(1) *First.* Using the Index of National Stock Numbers and Part Numbers, find the pertinent National stock number or part number. This index is in NIIN sequence followed by a list of part numbers in alphameric sequence, cross-referenced to the illustration figure number and item number.

(2) *Second.* After finding the figure and item number, locate the figure and item number in the repair parts list.

6. Abbreviations

Not applicable.

(Next printed page is 4.)

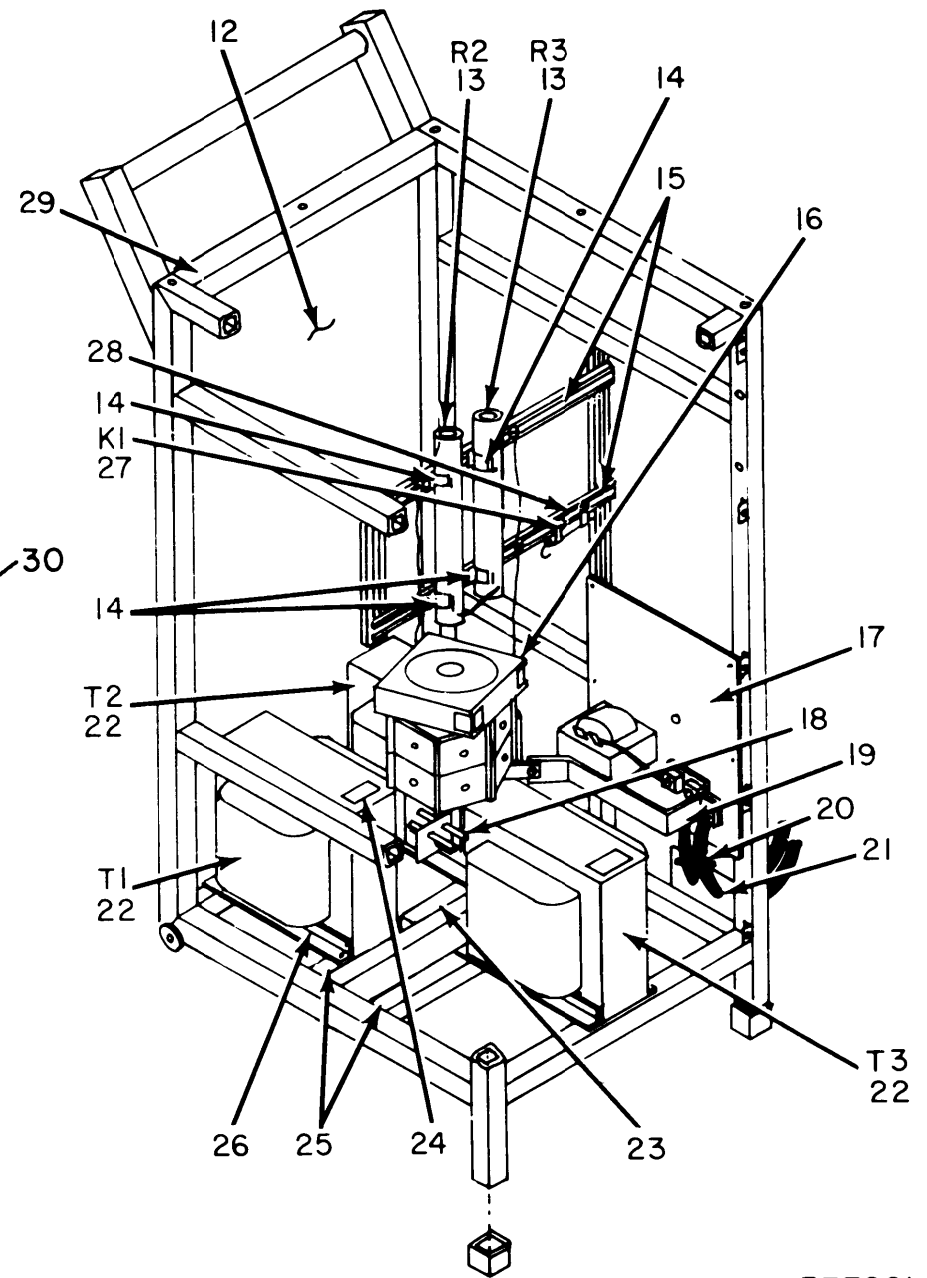
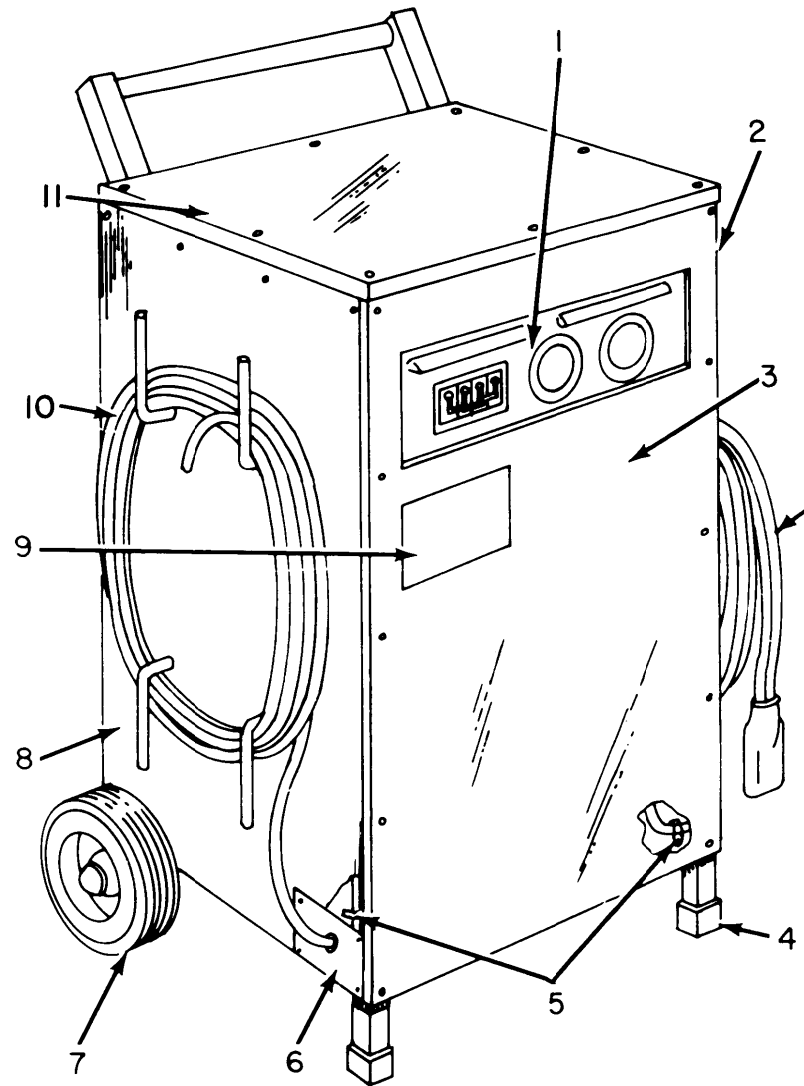


Figure 1. Power Supply PP-4606A/G.

EL3ZE001

| SECTION II (1) ILLUSTRATION (A) (B) FIG ITEM NO. NO. | | (2) SMR CODE | (3) NATIONAL STOCK NUMBER | (4) PART NUMBER | (5) FSCM | TM 11-6130-243-24P-1 (6) DESCRIPTION | USABLE ON CODE | (7) U/M | (8) QTY INC IN UNIT |
|---|----|--------------------|------------------------------------|-----------------------|-------------|--|----------------|------------|---------------------------------|
| GROUP 00 POWER SUPPLY PP-4606A/G | | | | | | | | | |
| 1 | 1 | XDHHH | | 10041 | 23330 | ASSEMBLY,PANEL,INS | | EA | 1 |
| 1 | 2 | XDHZZ | | 31400135-2 | 23330 | COVER,SIDE,RH | | EA | 1 |
| 1 | 3 | XDHZZ | | 31400110 | 23330 | COVER,FRONT | | EA | 1 |
| 1 | 4 | XDHZZ | | 10060 | 23330 | FOOT | | EA | 2 |
| 1 | 5 | PAHZZ | 5975-00-296-6086 | 3304 | 59730 | CLAMP | | EA | 2 |
| 1 | 6 | XDHZZ | | 21400134 | 23330 | CABLE,PLATE | | EA | 1 |
| 1 | 7 | XDHZZ | | 12500014 | 23330 | WHEEL | | EA | 2 |
| 1 | 8 | XDHZZ | | 31400135-1 | 23330 | COVER,SIDE,LH | | EA | 1 |
| 1 | 9 | XDHZZ | | 16900008 | 23330 | PLATE,IDENT | | EA | 1 |
| 1 | 10 | PAOZZ | 6150-00-642-7561 | AN2551D20 | 88044 | CABLE ASSY,POWER | | EA | 1 |
| 1 | 11 | XDHZZ | | 31400106 | 23330 | TOP,COVER | | EA | 1 |
| 1 | 12 | XDHZZ | | 31400136 | 23330 | COVER,READ | | EA | 1 |
| 1 | 13 | XDHZZ | | VK200W | 12697 | RESISTOR | | EA | 2 |
| 1 | 14 | XDHZZ | | 6021-18A | 91506 | CLIP,COMPONENT | | EA | 4 |
| 1 | 15 | XDHZZ | | 11400156 | 23330 | SUPPORT,RESISTOR | | EA | 2 |
| 1 | 16 | XDHHH | | 10016 | 23330 | HEAT SINK ASY | | EA | 1 |
| 1 | 17 | XDHHH | | 10042 | 23330 | ASSEMBLY,CMPNT PL | | EA | 1 |
| 1 | 18 | XDHZZ | | 13100004 | 23330 | SEPARATOR,WIRE | | EA | 1 |
| 1 | 19 | XDHZZ | | 21400147 | 23330 | BUS,DC RET | | EA | 1 |
| 1 | 20 | PAHZZ | 5975-00-518-1908 | 3303 | 59730 | CLAMP | | EA | 1 |
| 1 | 21 | XDHZZ | | 21400133 | 23330 | CABLE,PLATE | | EA | 1 |
| 1 | 22 | XDHZZ | | 10022 | 23330 | TRANSFORMER | | EA | 3 |
| 1 | 23 | XDHZZ | | 21400140 | 23330 | BRACKET | | EA | 1 |
| 1 | 24 | XDHZZ | | 13100008 | 23330 | STRIP,MARKER | | EA | 1 |
| 1 | 25 | XDHZZ | | 11400126 | 23330 | SUPPORT | | EA | 2 |
| 1 | 26 | XDHZZ | | 11400154 | 23330 | BRACKET | | EA | 1 |
| 1 | 27 | XDHZZ | | 10062 | 23330 | RELAY,OVERLOAD | | EA | 1 |
| 1 | 28 | XDHZZ | | 13100006 | 23330 | INSULATOR | | EA | 1 |
| 1 | 29 | XDHZZ | | 41400103 | 23330 | FRAME ASSEMBLY | | EA | 1 |
| 1 | 30 | PAOZZ | 6145-00-643-0030 | C004HGF-10-07 | 81349 | CABLE | | EA | 1 |

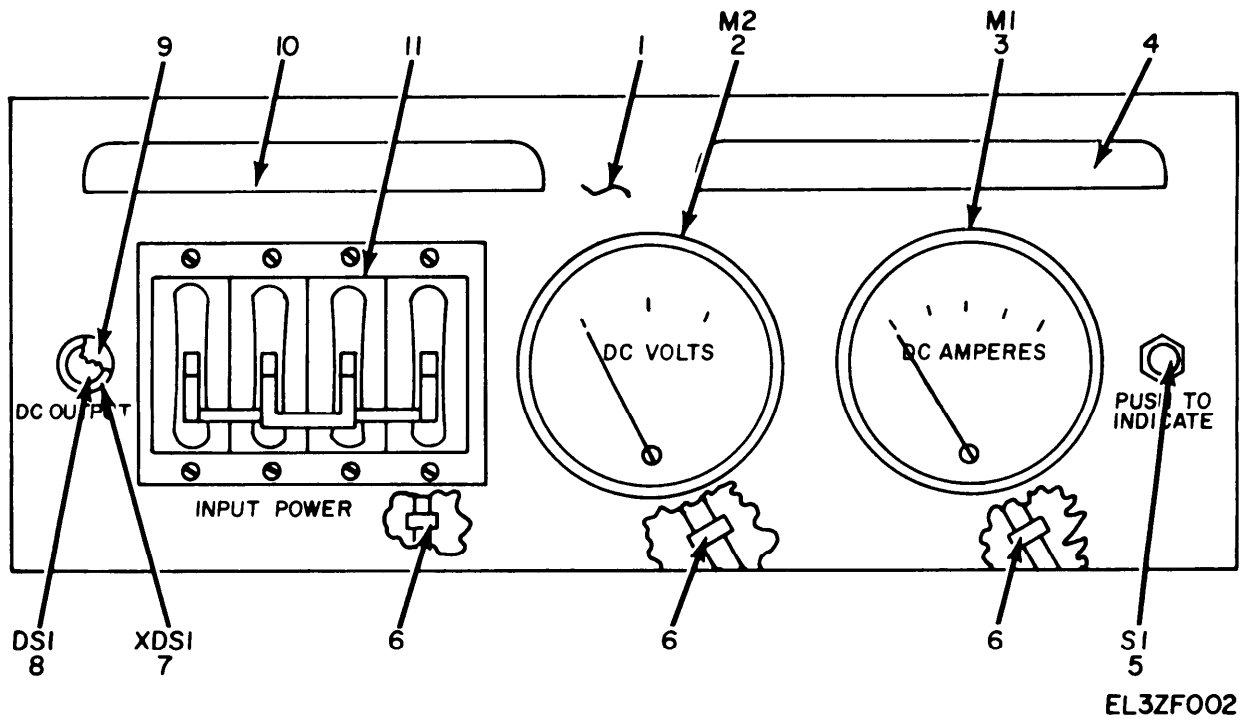
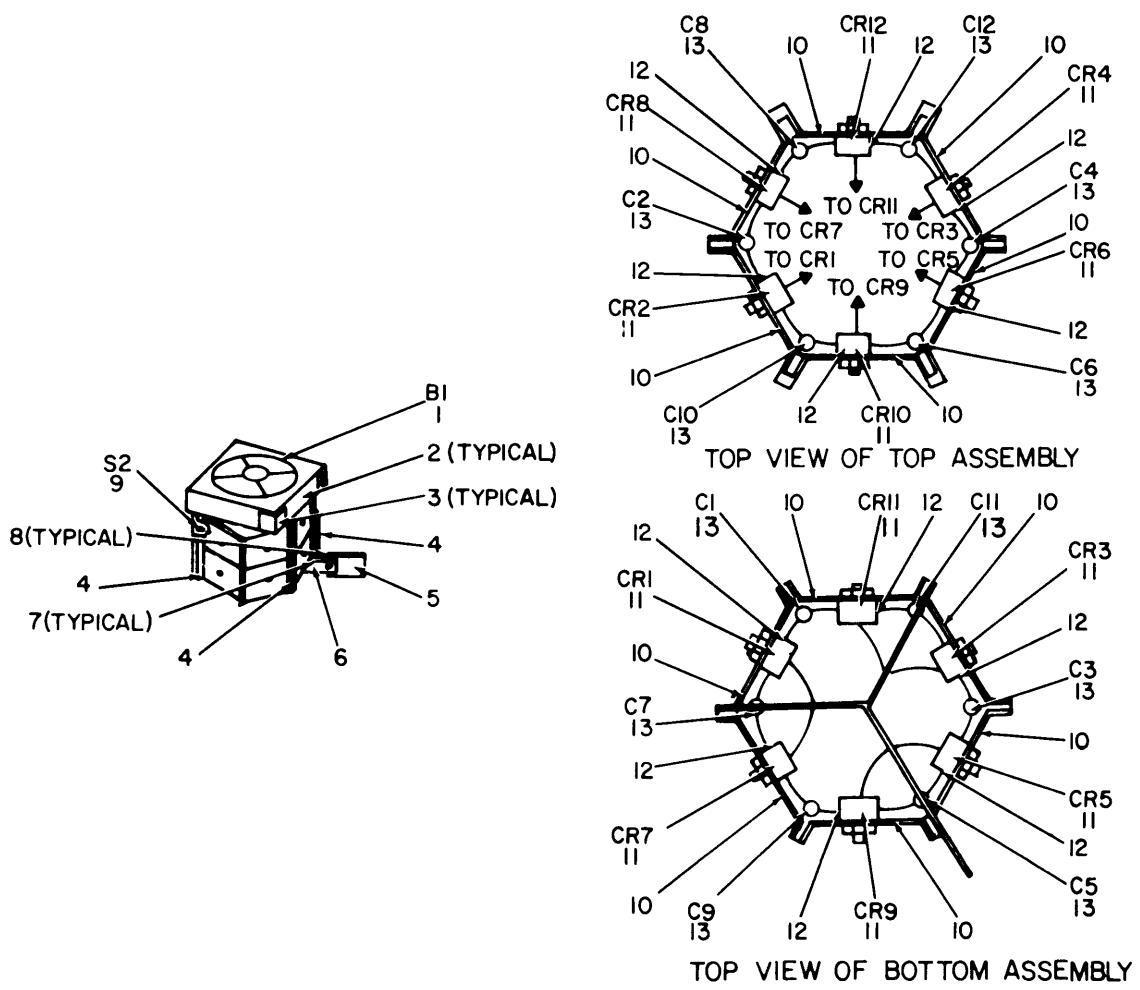


Figure 2. Power Supply PP-4606A/G, Front Panel.

| SECTION II (1) ILLUSTRATION | | (2) | (3) | (4) | (5) | TM 11-6130-243-24P-1 (6) | (7) | (8) |
|-----------------------------------|--------------------|-------------|-----------------------------|------------------|-------|-----------------------------|----------------|--------------------------|
| (A) FIG NO. | (B) ITEM NO. | SMR CODE | NATIONAL STOCK NUMBER | PART NUMBER | FSCM | DESCRIPTION | USABLE ON CODE | QTY INC IN UNIT |
| 2 | 1 | XDHZZ | | 31400104 | 23330 | PANEL | EA | 1 |
| 2 | 2 | PAHZZ | 6625-00-580-5877 | MR36W040DCVVR | 77221 | VOLTMETER | EA | 1 |
| 2 | 3 | PAHZZ | 6625-00-580-8321 | MR36W30DCAAR | 77221 | AMMETER | EA | 1 |
| 2 | 4 | PAHZZ | 5975-00-682-0306 | NC3030 | 97539 | COVER | EA | 1 |
| 2 | 5 | PAHZZ | 5930-00-501-0103 | 3392AE | 04009 | SWITCH, PUSH BTN | EA | 1 |
| 2 | 6 | XDHZZ | | 834 | 83330 | CLAMP | EA | 3 |
| 2 | 7 | PAHZZ | 6210-00-845-7281 | 81-0410-0111-201 | 72619 | INDICATOR | EA | 1 |
| 2 | 8 | PAOZZ | 6240-00-155-8714 | MS25231-313 | 96906 | LAMP | EA | 1 |
| 2 | 9 | XDHZZ | | 8001 | 09922 | PACKING, PREFORMED | EA | 1 |
| 2 | 10 | XDHZZ | | 13100009 | 23330 | COVER | EA | 1 |
| 2 | 11 | XDHZZ | | 10061 | 23330 | ASSEMBLY, CB | EA | 1 |



ELOKH003

Figure 3. Power Supply PP-4606A/G, Diode and Heat Sink Assemblies.

| SECTION II (1) ILLUSTRATION | | (2) | (3) | (4) | (5) | TM 11-6130-243-24P-1 (6) | (7) | (8) |
|-----------------------------------|--------------------|-------------|-----------------------------|-----------------|-------|-----------------------------|----------------|--------------------------|
| (A) FIG NO. | (B) ITEM NO. | SMR CODE | NATIONAL STOCK NUMBER | PART NUMBER | FSCM | DESCRIPTION | USABLE ON CODE | QTY INC IN UNIT |
| 3 | 1 | XDHZZ | | 100CFM200AC5060 | 82877 | FAN, SENTINEL | EA | 1 |
| 3 | 2 | XDHZZ | | 11400117 | 23330 | FAN, SUPPORT | EA | 4 |
| 3 | 3 | XDHZZ | | 11400146 | 23330 | CLIP, BUS | EA | 4 |
| 3 | 4 | XDHZZ | | 11400113 | 23330 | HEAT SINK, SUPPORT | EA | 3 |
| 3 | 5 | XDHZZ | | 21400123 | 23330 | BUS BAR, LONG | EA | 1 |
| 3 | 6 | XDHZZ | | 21400124 | 23330 | BUS BAR, SHORT | EA | 1 |
| 3 | 7 | XDHZZ | | 11400115 | 23330 | INSULATOR, SHORT | EA | 3 |
| 3 | 8 | XDHZZ | | 11400116 | 23330 | INSULATOR, LONG | EA | 3 |
| 3 | 9 | XDHZZ | | 15100052 | 23330 | SWITCH, THERMAL | EA | 1 |
| 3 | 10 | XDHZZ | | 21400118 | 23330 | PLATE, HEAT SINK | EA | 12 |
| 3 | 11 | PAHZZ | 5961-00-460-4996 | 1N1183A | 02735 | SEMICONDUCTOR, DIODE | EA | 12 |
| 3 | 12 | XDHZZ | | 11400129 | 23330 | HEAT SINK | EA | 12 |
| 3 | 13 | XDHZZ | | ZD2X205 | 12406 | CAPACITOR | EA | 12 |

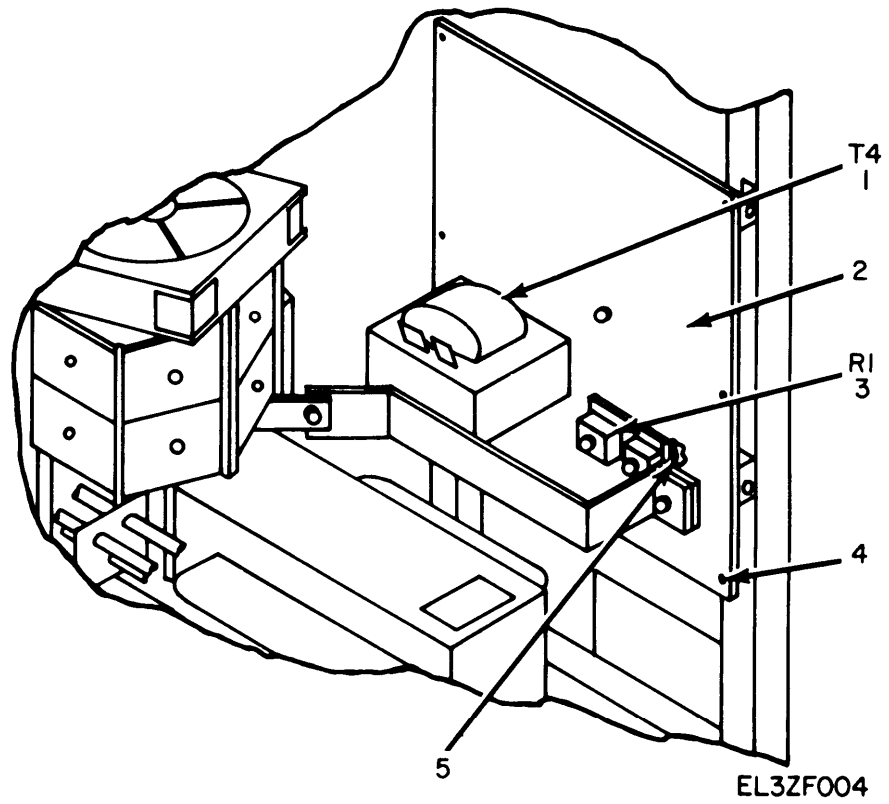


Figure 4. Power Supply PP-4606A/G, Component Plate Assembly.

| SECTION II (1) ILLUSTRATION | | (2) | (3) | (4) | (5) | TM 11-6130-243-24P-1 (6) | (7) | (8) |
|-----------------------------------|-------------|-------------|-----------------------------|----------------|-------|-----------------------------|----------------|--------------------------|
| FIG NO. | ITEM NO. | SMR CODE | NATIONAL STOCK NUMBER | PART NUMBER | FSCM | DESCRIPTION | USABLE ON CODE | QTY INC IN UNIT |
| 4 | 1 | XDHZZ | | 10043 | 23330 | TRANSFORMER | EA | 1 |
| 4 | 2 | XDHZZ | | 31400138 | 23330 | PLATE | EA | 1 |
| 4 | 3 | XDHZZ | | 8200-300 | 91812 | SHUNT | EA | 1 |
| 4 | 4 | PAHZZ | 5310-00-208-2709 | CL832-2 | 46384 | NUT | EA | 8 |
| 4 | 5 | XDHZZ | | 13100002 | 23330 | INSULATOR | EA | 1 |

NATIONAL STOCK NUMBER AND PART NUMBER INDEX

NOTE: LATEST NATIONAL STOCK NUMBER AND PART NUMBER ASSIGNMENT ARE INCLUDED AT END OF INDEX.

| STOCK NUMBER | FIGURE NO. | ITEM NO. | STOCK NUMBER NO. | FIGURE NO. | ITEM NO. | | |
|------------------|------------|----------|------------------|------------------|-----------|-----|-----|
| 6240-00-155-8714 | 2 | 8 | 6625-00-580-52 | | 2 | | |
| 5310-00-208-2709 | 4 | 4 | 6625-00-580-82 | | 3 | | |
| 5975-00-296-6086 | 1 | 5 | 6150-00-642-71 | | 10 | | |
| 5961-00-460-4996 | 3 | 11 | 5975-00-682-02 | | 4 | | |
| 5930-00-501-0103 | 2 | 5 | 6210-00-845-72 | | 7 | | |
| 5975-00-518-1908 | 1 | 20 | | | | | |
| PART NUMBER | FIG. FSCM | ITEM NO. | PART NO. | FIG. NUMBER | ITEM FSCM | NO. | NO. |
| AN2551D20 | 88044 | 1 | 10 | 13100004 | 23330 | 1 | 18 |
| CL832-2 | 46384 | 4 | 4 | 13100006 | 23330 | 1 | 28 |
| MR36W040DCVVR | 77221 | 2 | 2 | 13100008 | 23330 | 1 | 24 |
| MR36W30DCAAR | 77221 | 2 | 3 | 13100009 | 23330 | 2 | 10 |
| MS25231-313 | 96906 | 2 | 8 | 15100052 | 23330 | 3 | 9 |
| NC3030 | 97539 | 2 | 4 | 16900008 | 23330 | 1 | 9 |
| VK200W | 12697 | 1 | 13 | 21400118 | 23330 | 3 | 10 |
| ZD2X205 | 12406 | 3 | 13 | 21400123 | 23330 | 3 | 5 |
| 1N1183A | 2735 | 3 | 11 | 21400124 | 23330 | 3 | 6 |
| 100CFM200AC5060 | 82877 | 3 | 1 | 21400133 | 23330 | 1 | 21 |
| 10016 | 23330 | 1 | 16 | 21400134 | 23330 | 1 | 6 |
| 10022 | 23330 | 1 | 22 | 21400140 | 23330 | 1 | 23 |
| 10041 | 23330 | 1 | 1 | 21400147 | 23330 | 1 | 19 |
| 10042 | 23330 | 1 | 17 | 31400104 | 23330 | 2 | 1 |
| 10043 | 23330 | 4 | 1 | 31400106 | 23330 | 1 | 11 |
| 10060 | 23330 | 1 | 4 | 31400110 | 23330 | 1 | 3 |
| 10061 | 23330 | 2 | 11 | 31400135-1 | 23330 | 1 | 8 |
| 10062 | 23330 | 1 | 27 | 31400135-2 | 23330 | 1 | 2 |
| 11400113 | 23330 | 3 | 4 | 31400136 | 23330 | 1 | 12 |
| 11400115 | 23330 | 3 | 7 | 31400138 | 23330 | 4 | 2 |
| 11400116 | 23330 | 3 | 8 | 3303 | 59730 | 1 | 20 |
| 11400117 | 23330 | 3 | 2 | 3304 | 58730 | 1 | 5 |
| 11400126 | 23330 | 1 | 25 | 3392AE | 4009 | 2 | 5 |
| 11400129 | 23330 | 3 | 12 | 41400103 | 23330 | 1 | 29 |
| 11400146 | 23330 | 3 | 3 | 6021-18A | 91506 | 1 | 14 |
| 11400154 | 23330 | 1 | 26 | 8001 | 9922 | 2 | 9 |
| 11400156 | 23330 | 1 | 15 | 81-0410-0111-201 | 72619 | 2 | 7 |
| 12500014 | 23330 | 1 | 7 | 8200-300 | 91812 | 4 | 3 |
| 13100002 | 23330 | 4 | 5 | 834 | 83330 | 2 | 6 |

LATEST NATIONAL STOCK NUMBER ASSIGNMENT

| STOCK NUMBER | FIG. NO. | ITEM NO. |
|------------------|----------|----------|
| 6145-00-643-0030 | 1 | 30 |

LATEST PART NUMBER ASSIGNMENT

| PART NUMBER | FIG. FSCM | ITEM NO. | NO. |
|---------------|-----------|----------|-----|
| C004HGF-10-07 | 81349 | 1 | 30 |

By Order of the Secretary of the Army:

BERNARD W. ROGERS
General, United States Army
Chief of Staff

Official:

J. C. PENNINGTON
Brigadier General, United States Army
The Adjutant General

DISTRIBUTION:

To redistributed in accordance with DA Form 12-31, organizational Maintenance requirements for All Rotor Wing Aircraft.

RECOMMENDED CHANGES TO EQUIPMENT TECHNICAL MANUALS



SOMETHING WRONG WITH THIS MANUAL?

THEN... JOT DOWN THE DOPE ABOUT IT ON THIS FORM, TEAR IT OUT, FOLD IT AND DROP IT IN THE MAIL!

FROM: (YOUR UNIT'S COMPLETE ADDRESS)

Commander
Stateside Army Depot
ATTN: AMSTA-US
Stateside, N.J. 07703

DATE 10 July 1975

| | | |
|---|-------------------|------------------------------|
| PUBLICATION NUMBER TM 11-5840-340-12 | DATE 23 Jan 74 | TITLE Radar Set AN/PSC-76 |
|---|-------------------|------------------------------|

BE EXACT... PIN-POINT WHERE IT IS IN THIS SPACE TELL WHAT IS WRONG AND WHAT SHOULD BE DONE ABOUT IT:

| PAGE NO. | PARA-GRAPH | FIGURE NO. | TABLE NO. | |
|----------|------------|------------|-----------|--|
| 2-25 | 2-28 | | | <p>Recommend that the installation antenna alignment procedure be changed throughout to specify a 2° IFF antenna lag rather than 1°.</p> <p>REASON: Experience has shown that with only a 1° lag, the antenna servo system is too sensitive to wind gusting in excess of 25 knots, and has a tendency to rapidly accelerate and decelerate as it hunts, causing strain to the drive train. Hunting is minimized by adjusting the lag to 2° without degradation of operation.</p> |
| 3-10 | 3-3 | | 3-1 | <p>Item 5, Functions column. Change "2 db" to "3db."</p> <p>REASON: The adjustment procedure for the TRANS POWER FAULT indicator calls for a 3 db (500 watts) adjustment to light the TRANS POWER FAULT indicator.</p> |
| 5-6 | 5-8 | | | <p>Add new step f.1 to read, "Replace cover plate removed in step e.1, above."</p> <p>REASON: To replace the cover plate.</p> |
| | | FO3 | | <p>Zone C 3. On J1-2, change "+24 VDC to "+5 VDC."</p> <p>REASON: This is the output line of the 5 VDC power supply. + 24 VDC is the input voltage.</p> |

TEAR ALONG DOTTED LINE

| | |
|--|--|
| TYPED NAME, GRADE OR TITLE, AND TELEPHONE NUMBER SSG I. M. DeSpirito 999-1776 | SIGN HERE: <i>SSG I. M. DeSpirito</i> |
|--|--|

FILL IN YOUR
UNIT'S ADDRESS



FOLD BACK

DEPARTMENT OF THE ARMY

OFFICIAL BUSINESS

PENALTY FOR PRIVATE USE, \$300

Commander
US Army Electronics Command
ATTN: DRSEL-MA-Q
Fort Monmouth, New Jersey 07703

FOLD BACK

TEAR ALONG DOTTED LINE

REVERSE OF DA FORM 2026-2 (TEST)

